

Product Catalog 2007 - 2008



Complete Line of
Radiation Protection Products

www.afabxray.com

800-330-5323

about a-fabco



Since 1970, a-fabco has been supplying lead products for medical and industrial customers. Our product line is varied and in many cases the products have been dictated by the need or at the suggestion of the end user.

This catalog is a collection of some of these items, as well as a few of our own ideas. We do not try to steer the customer in any specific direction or to any specific product. We have found most users do not always think alike. This also accounts for our variety of products.

We hope you will find one of our products that you can use. If not, talk to us about your ideas and we will try to create your product.

Please also note that there are no published prices within the catalog. We do not have and never have had a "price list". Instead we prefer the personal contact of a phone call or e-mail. We are readily available for phone, fax or e-mail quotes. Give us your facts and we will give you a timely quote.



a-fabco, inc.
P.O. Box 2097
11550 U.S. Hwy 41 S.
Gibsonton, FL 33534

PH 800-330-5323
PH 813-677-8790
FAX 813-671-1865



ECONOMY-FIXED AND MOBILE LEAD BARRIERS

1. Economical lightweight design minimizes shipping cost
2. Shipped assembled for rapid, easy installation
3. All mounting hardware included
4. Can be provided in any lead thickness up to 1/2" for high energy shielding.
5. Special design and sizes available
6. Small profile outriggers minimize tripping danger

MV-540



Mobile Section 36"W x 80"H with 10" x 12" View Window. Other size glass can be provided up to within 3 inches of panel edges.

MP-540



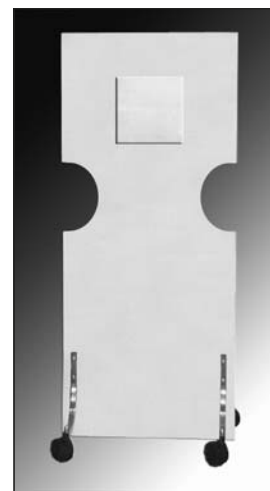
Mobile Shield 48"W x 80"H with 1.58mm lead. Other lead thicknesses are available.

MM-540.3



Fixed Barrier, 3 section, 2 window unit. 2' x 2' x 2' x 80" high. Two each lead glass view windows. Angles can be designated by user.

MV-555



Mobile Section provides maximum shielding while palpating or holding patient. Height of cutouts can be optimized for particular individual.

MF-600



Lithotripter Operator Wall

Oversize unit allows for multiple observer viewing. Includes integral work shelf with storage compartment. 66"W x 80"H with 1.5mm lead and 48"W x 36"H lead glass view window.

CONSTRUCTION

- ◆ Specified lead sandwiched between lightweight "Foamkore" structural panels
- ◆ Panel facing in grey or beige high pressure laminate (p/lam) or natural birch.
- ◆ All edges banded with same material as face.
- ◆ Lead protection from 0.8mm to 2.1mm.
- ◆ Protective view windows of lead glass equal to specified lead.
- ◆ Fixed panels supplied with all require wall, floor and/ or ceiling supports to meet room requirements.
- ◆ Mobile unit outriggers constructed of thick wall stainless steel tubing and 4 ea lockable swivel casters.
- ◆ Multiple section units are provided complete with mating battens and attachment angles for rapid assembly.
- ◆ Sections are shipped crated and completely assembled with digital photos for assembly of multiple units.

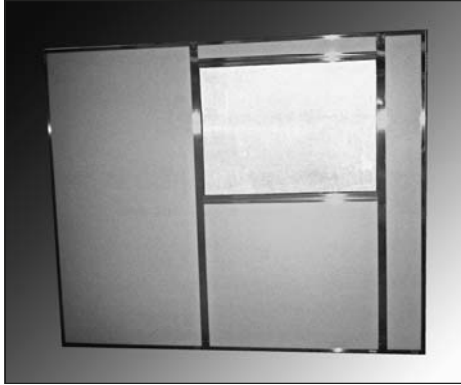
DELUXE FIXED & MOBILE OPERATOR CONTROL WALLS

These barriers are often used in place of a built-on-site operator control area. The technician can view the patient and control the exposure while remaining radiation safe.

The barriers are quickly installed, take up a minimum of floor space and can be supplied with a shelf for the x-ray control or storage.

The units can be supplied with lead acrylic windows and stainless steel frames. When more than one or angled units are desired, a-fabco barriers are made to butt together for rapid connection. All units are shipped in completely assembled individual sections which have been put together at the plant to insure proper fit before disassembly and shipment.

DB-420 Multiple Sections



DB-420

Deluxe Stainless Steel Barriers

- Available in multiple sections, 84"H
- Sections can be ganged together for multiple angle configurations
- Acrylic full width view windows are available in various lead equivalencies; 0.5, 0.8, 1.0, 1.5, 2.0
- Lower leaded opaque sections can be supplied in matching lead equivalencies with any customer desired plastic laminate color.
- Full stainless steel frames

DB-420 Single Section



Single Section

36"W x 84"H
Lead acrylic view window
Lower 36"W x 36"H leaded opaque panel.

DB-420 Two Section



Barriers can be constructed in any single section width up to 96" with lead acrylic window size up to 96"W x 48"H with lead equivalencies from 0.3mm to 2.0mm.

Mobile barriers are made in 80" height to allow for passage thru standard 84" hospital doors.

Any fixed or mobile barrier can be supplied with a shelf and or storage compartment.

DM-420 Mobile Deluxe Barrier



Any single section Deluxe barrier can be made mobile with the addition of 4 ea. low profile stainless steel outriggers and 4 each lockable swivel casters. Our special outrigger design supports minimize the possibility of tripping when going around the end of the barrier.



Catalog # PD-750

SPECIFICATIONS

- Overall Cabinet Size * 48"W x 24"D x 36-1/2"H
- 3 Sections
- Shielded with 3.175mm lead on all 6 surfaces
- Plastic laminate top
- * Sharps compartment plus 3 drawer module
- ** Center 3 shelf module, 16"W
- *** Trash disposer module with thru the top lockable cover, 16"W (includes plastic trash container)
- Option: Stainless Steel and Corian tops available at additional cost.

Catalog # PD-750



CATALOG # PD-751 (Not Shown)

- Overall Cabinet Size 36"W x 24"D x 36-1/2"H
- Plastic Laminate Top
- Selection of any two modules as described above

SLIDING DOOR LOCKABLE WORKSTATION

This unit can be tailored to meet your needs for storage, sharps, recessed well chamber, trash, ammo cases etc. it is available in various lead thicknesses to accommodate most isotope and work preferences.

"Unimod" construction allows for easy substitution of insertable modules to provide the technician ultimate selectability.

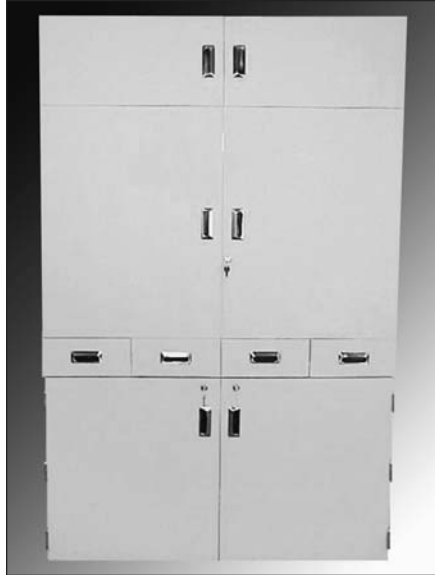


CATALOG #

*PD-752	Cut out for recessed well chamber
**PD-753	3 drawer plus 12" D storage compartment module
***PD-755	Trash module with drop thru top
PD-750.25	Increase lead to 1/4" all six sides
PD-750.50	Increase lead to 1/2" all six sides
PD-450	"L" Block Shield 12"x 12" with 4.2mm lead glass
PD-451	"L" Block Shield 12" x 16" with 4.2mm lead glass



LEADED ARMOIRE WORK STATION



Cat. # DE-750

This self contained workstation could eliminate the need for a "Hot Lab" and free up that costly space for other uses. It is equipped with lockable doors and drawers to provide maximum security.

Interior work counter area included lighting and a plug strip for instruments. The wall mounted, adjustable tilt dose calibrator shelf frees up counter space for use of any size "L" block shield and the construction will accommodate even the heaviest "L" block unit.



Overall Size: 48"W x 24"D x 80"H
Shielding: 3.175mm all areas
except upper storage compartment

Lockable 5" deep full extension drawers across the full width of the cabinet provide ample storage.



The 3/4" lead shielded flood phantom storage area allows for safe storage for 3 phantoms.



The center lower section can be provided with an optional 2" thick leaded storage drawer for storage of high energy materials. Optional drop thru ports can also be provided for the trash or sharps areas. Shelves are adjustable.



CATALOG #

DE-750.2	Opt.1 * 2" high energy compartment with 5" X 20" drawer.
DE-750.25	Opt.2 * Provide 1/4" lead on all surfaces
DE-750.4	Shielded Recess for calibrator well chamber
DE-750.5	Drop thru port, 5" diameter, lockable
DE-750.8	Trash chute, 5" x 8" with cover

UNIMOD - COMBINATION RADIOISOTOPE STORAGE CABINET & WORKSTATION



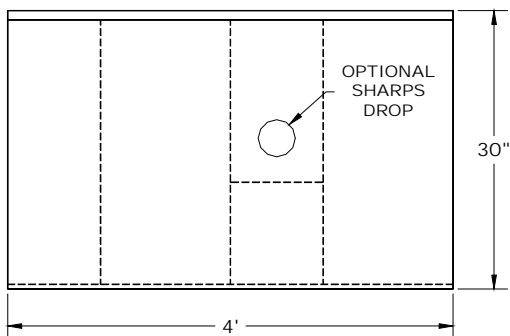
Cat.# DF-480

The unique design allows for storage of low and high energy isotopes in one cabinet. The unit is built with 1/4" lead on all six sides, special 3/4" leaded flood phantom chamber. A 2" thick lead high energy storage chamber is available as an option.

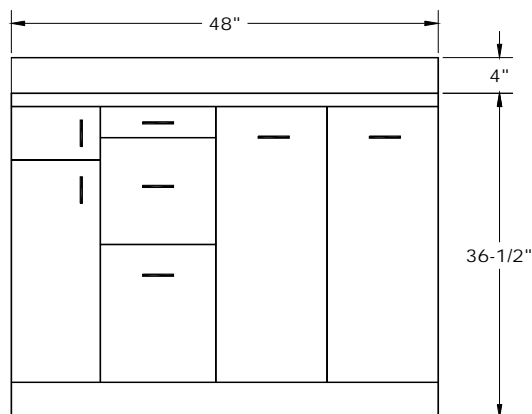
CONSTRUCTION

- ◆ Glued and screwed plywood over lead
- ◆ Sturdy welded metal base with toe space
- ◆ All interior and exterior surfaces covered in plastic laminate with choice of Corian®, stainless steel or plastic laminate top
- ◆ Compact design allows for maximum use of lab space.

TOP VIEW



FRONT VIEW



CAT. #

OPTIONS

CAT. #	OPTIONS
DF-260 See page 5	Same features as DF-480 but 26" wide * less trash, high energy and flood phantom . Unit 26"W
DF-360 See page 5	Same features as DF-480 but 36" wide * less trash section or Sharps storage compartment. Unit 36"W
DF-480DT	Lockable drop thru port for Sharps, 6" diameter
DF-480S	Substitute stainless steel counter top for p/lam.
DF-480.3	Substitute 1/8" lead for 1/4"
DF-480.5	Substitute 1/2" lead for 1/4"
DF-480-R	Recessed well chamber compartment
DF-480-K	Locks for doors & drawers

STANDARD SPECIFICATIONS * CAT # DF-480

Overall Cabinet Size - 48" W x 36-1/2" H X 30"D

- **Shielding Thickness** - 1/4" lead all cabinet walls except as noted.
- **Heavy Duty Hinges** and runners for long life.
- **Recessed Door Pulls**
- **Storage Drawers** - 6" Deep; 9" Deep; 16" Deep with leaded fronts
- **Flood Phantom Chamber**, 3 Compartment, 3/4" Lead shielding * 20"H x 22"D * Adjustable dividers
- **High Energy Storage Compartment** - 2" Thick Lead All Sides with pull out syringe drawer 4-1/2"W x 3-1/2"H x 12" Deep
- **Plastic Laminate Top** & all surfaces inside and out

Could Eliminate Need for a "Hot Lab"

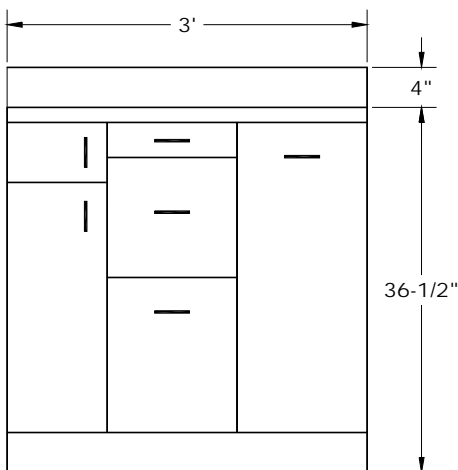
UNIMOD - COMBINATION
RADIOISOTOPE STORAGE CABINET & WORKSTATION



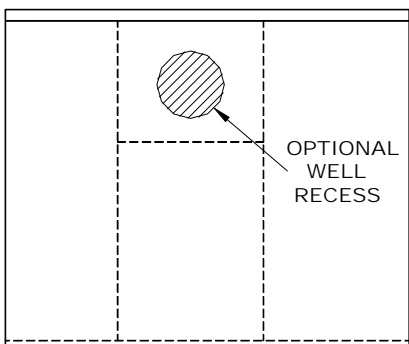
Cat. # DF-360

Same features as DF-480 but 36" wide * less trash section or Sharps storage compartment. Unit 36"W

Cat. # DF-360 Front View

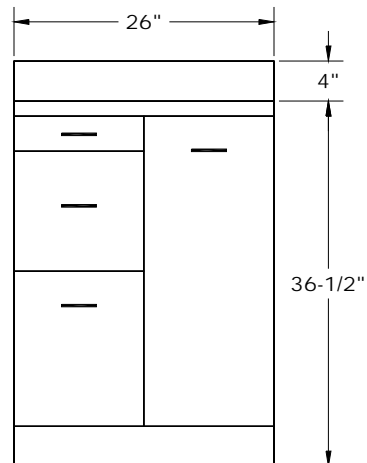


Cat. # DF-360 Top View

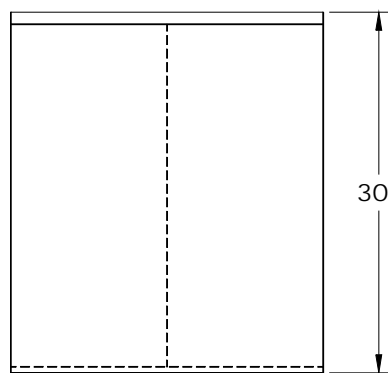


Same features as DF- 480 but 26" wide
 * less trash, high energy and flood phantom

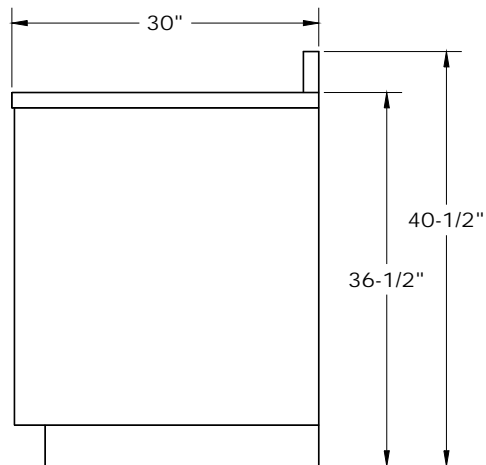
Cat. # DF-260 Front View

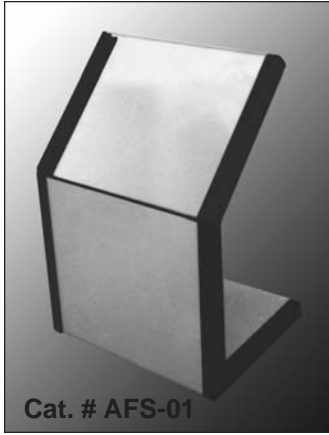


Cat. # DF-260 Top View



DF Series End View





Cat. # AFS-01

PROVIDES PROTECTION FOR ROUTINE ISOTOPE WORK

Ideal for protection of eyes and body when loading syringes, set up of technecium generators and loading of radium implants.

TABLETOP RADIATION SHIELD

SPECIFICATIONS

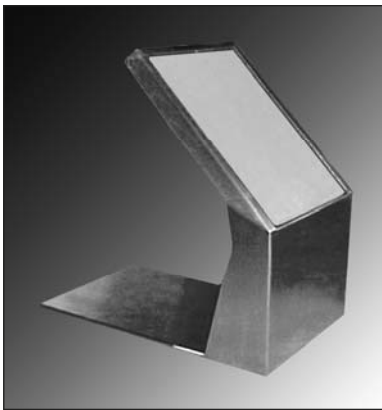
SHIELDING EQUIVALENCIES

- ➔ Bottom Panel = 1/4" Lead (6.4mm)
- ➔ Side Walls = 1/4" Lead (6.4mm)
- ➔ View Window = 2.4mm
- ➔ Two Sizes * 10" x 12", 12" x 16"
- ➔ Grey or Beige Plastic Laminate Skin.
- ➔ Option * Stainless Steel Frame

AFS-01	Standard Table Top Operator Shield * 6.5mm lead protection and 10" x 12" lead glass view window with 2.4mm lead equivalency.	AFS-02	Jumbo Table Top Operator Shield * 6.5mm lead protection and 12" x 16" lead glass view window with 2.4mm lead equivalency.
AFS-11	Same as standard but with 4.4mm lead equivalency glass.	AFS-22	Same as jumbo but with 4.4mm lead equivalency glass.

Cat. # DDS-01

DOSE DRAWING SHIELD



SPECIFICATIONS

- ➔ 12"W x 22" H
- ➔ 12" x 12" View windows
- ➔ Stainless steel construction
- ➔ Lead Protection 1/4" or 1/2"
- ➔ Stainless steel elution tray (not shown)
- ➔ View window equivalency equals total of lead protection selected.



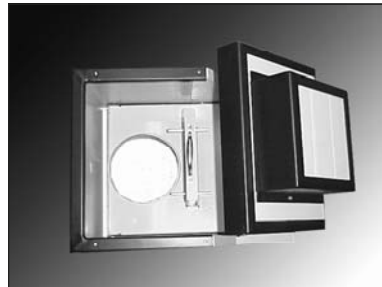
PET L-SHIELD AND CAVE

Cat. # AFP-01



SPECIFICATIONS

- ➔ 14"W x 26"H X 22" D
- ➔ Stainless steel front skin
- ➔ 1" and 2" Lead
- ➔ 3 sided cave, detachable, 12"H
- ➔ View window sizes 4"x 8" x 2", 8" x 8" x 2"
- ➔ Well Chamber Cut-outs for Recessing
- ➔ Convenient viewing angle
- ➔ 1" Drop down shield





SINK & DECAY CABINET

The Sink Decay Cabinet provides a convenient module for obtaining running water and staged storage for isotope decay. By rotating the readily decontaminated stainless steel drawers it is easy to keep control of the half life decay of spent materials three, five or eight half lives, while the “drop thru” ports allow for easy disposal.

The unleaded section of the sink cabinet provides convenient storage space for “cold” materials while the leaded center wall provides adequate shielding.



CATALOG NUMBER

DF-465	Sink decay cabinet, 28"W x 24D x 36-1/2"H.
DF-465.SS	As above with stainless steel top

SPECIFICATIONS

Sink Decay Cabinet with 5 each 5" x 5" x 20" stainless steel drawers and 3 each 6-1/2" x 6" x 20" drawers, 2 drop thru ports and dual lockable drawers. Stainless steel sink is 10" x 10" x 10" with hot and cold spigots and a gooseneck spout. Standard top of plastic laminate.

LEADED DECAY BIN

Can be used as inside or outside storage cabinet for radioactive waste. Heavy steel construction and padlock provides solid security. Unit can be supplied with various lead thicknesses to fit your need.

CATALOG NUMBER

DF-550	Decay Bin 30"W x 30"D X 36"H with 1/4" lead.
DF-550.3125	As above with 1/8" lead
DF-550.500	As above with 1/2" lead

SPECIFICATIONS

Heavy steel construction includes counter balanced hinge on lid and includes hasp and lock. Standard lead thickness is 1/4" however a variety of other lead thicknesses are available to suit your need.

Catalog # DF-550

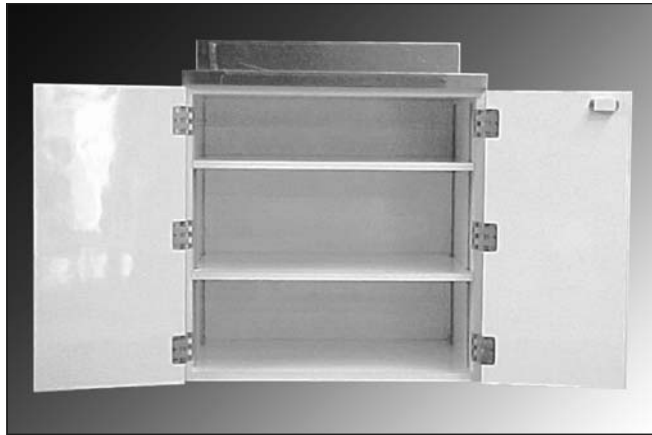


DECAY CABINETS

DF- 467

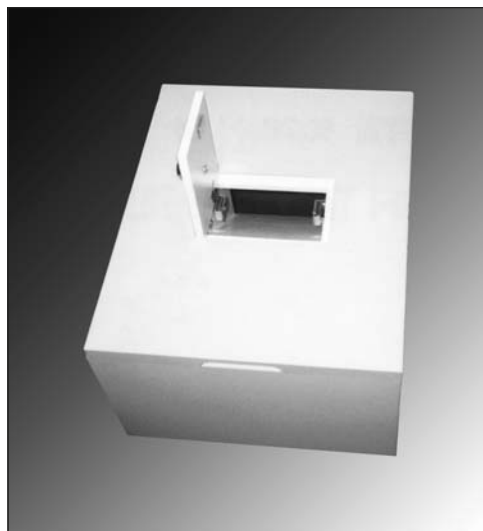


DF- 467



SPECIFICATIONS

DF- 467	30"W x 24"D x 36-1/2"H with 1/4" lead on all surfaces. Mica top with two adjustable shelves.
DF- 467.2	Same as above but with 1/8" lead
DF- 467.50	Same as above but with 1/2" lead
** Option	Stainless steel top (shown in photos) additional



DS-500

LEADED SHARPS CONTAINER

- ◆ Chute prevents exposure to radiation when door is open.
- ◆ 8"D X 13"W X 10"h
- ◆ Carrying Handles
- ◆ 3.175mm * 1/8" lead
- ◆ Full lid lifts for loading
- ◆ Leaded p/lam construction



PET SCAN WORKSTATION

The PET Station can provide all the features required for a fully shielded PET work area. Lead thickness of 1/4" throughout except in the center section.

The center section contains a 1-1/2" thick leaded compartment for the calibrator well. This allows for the chamber to be recessed, to gain extra space and eliminate the need for shielding rings. The lower center section allows for storage of the PET shipping container.

Side panels can be provided for waste storage with a "drop thru" chute or drawers for added storage.

SPECIFICATIONS

- **Overall Cabinet Size** * 42"W x 36-1/2"H x 30"D with 18" high backsplash.
- **Recessed Well Compartment** * 14"W x 16"H x 18" D * 1-1/2" thick lead
- **Leaded Waste Compartment** * 1/4" lead
- **Storage Drawers** * 10"W with removable inserts for decontamination.
- **Solid Construction** * Laminate covered lead plywood over a steel reinforced frame.
- **Standard Colors** * Gray or Beige * Custom colors available at additional cost.
- **Adjustable Dose Calibrator Shelf** * Tilt Back-splash mounted shelf frees up counter space.



OPTIONAL EQUIPMENT



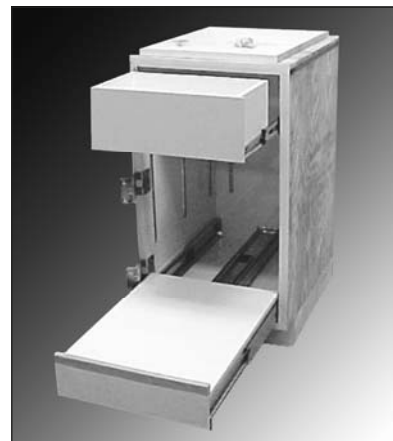
Catalog # PP-650-2

Dual Port Lockable sharps disposal. Can be recessed in cabinet or can stand alone. 15"L x 13"W x 14"H. Available in 1/8", 1/4", 1/2" or 1" lead thickness.



Catalog # PP-650-1

Single Port * Lockable "Thru Top" port for Sharps disposal.



Catalog # PP-652

Shipping Container Storage Module * The module shown in the photo above can be added to the PET work station above, or function as a stand alone unit.

SPECIALTY BARRIERS

PD-350

Mobile vertically adjustable personnel shield with "wrap around" sides and 5" diameter lockable casters.

56"W x 33"H *14" vertically adjustable height. Shielding equal to 1.5 or 2.1mm lead.



Folding Wall Shield *

This folding barrier can be used as a divider between two adjacent cath labs so that a procedure could be performed in one side while setup was being performed in the other side of the lab.

Extended wall size is 15'W x 7' high. Folds to a 9" thick stack. Lead equivalency 2.1mm or as required.



PD-352 Mobile Fluoro Barrier

2.1mm lead protection, 42" high, complete with ss handles and lockable casters.



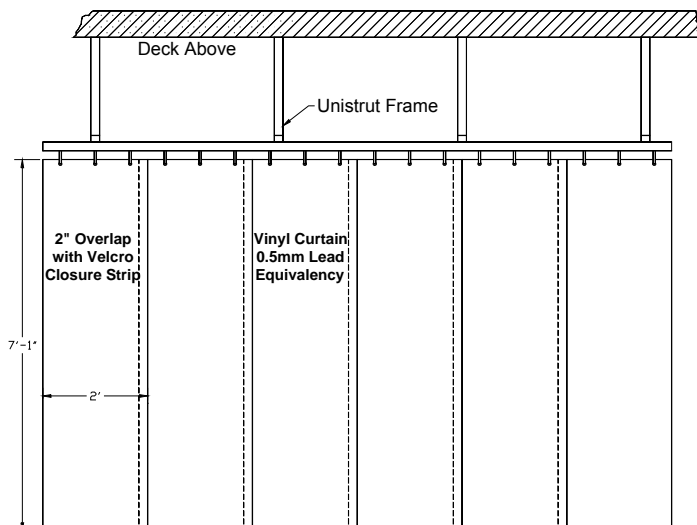
Mobile 3 Sided Enclosure

42"W x 32"D x 80"H
Laminated lead glass affords 2.1mm lead protection for both windows and opaque lower panels. Includes full width shelf. Unit can be provided in many custom sizes.



PD-351

Mobile fluoroscopic chair with storage cassette shelf, adjustable height seat and swivel casters. Size 36"W x 38"H x 30"D



Flexible Lead Vinyl Room Divider

A simple inexpensive method to provide shielding between adjacent Cath or E.R. Trauma rooms can be achieved by using a folding lead vinyl curtain as shown in the sketch.

The lead vinyl curtains are constructed with a Velcro "mating" strip to ensure proper overlap and layered shielding to provide maximum flexibility. Special reinforced grommets and heavy duty track & hangers complete the assembly which is offered in two shielding values. Specify length when ordering.

- Cat. AV-340.5 * Lead Equiv. 0.5mm
- Cat. AV-340.10 * Lead Equiv 1.0

ASSORTED ACCESSORIES

PD-320

“Saddle Bench” fits over standard film bin and provides for storage of 12, 14” x 17” cassettes. Comes complete with 18” or 24” high back splash.

PD-320.1 * Includes duplex outlet with 8’ cord.

PD-320.2 * Adjustable safelite complete with special bulb that is warranted for 20 years against burn out. Includes GBX filter.

PD-322 * Combination film bin/cassette storage cabinet, 5 trays for light tight compartment and 4 lower cassette storage compartments for up to 20 cassettes and 24” backslash.



AF-8000

Film Bin & Storage Cabinet

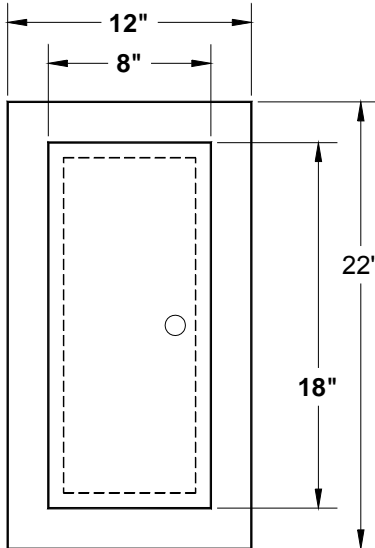
22-1/2”W x 36”D x 21-1/2”H
Dual function cabinet provides 5 compartment storage for all of your film sizes along with vertical cassette storage or unopened film boxes.

- Lightproof integrity
- Plastic laminate over melamine
- Spring activated touch latch

AF-8010 * cabinet minus backslash

AF-8011 * Backslash support

AF-8002 * Safelite 5”x7”, GBX2 Filter

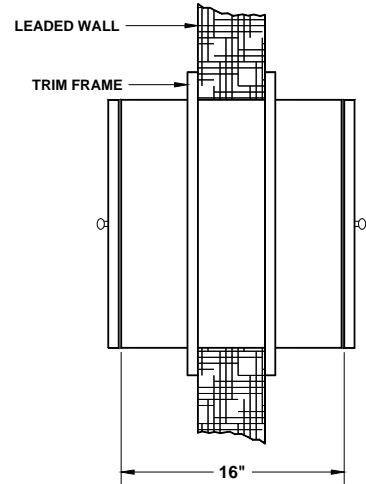


Cassette Transfer Cabinet

Allows for passage and storage of cassettes between x-ray room and dark room.

Cat. AF-3040

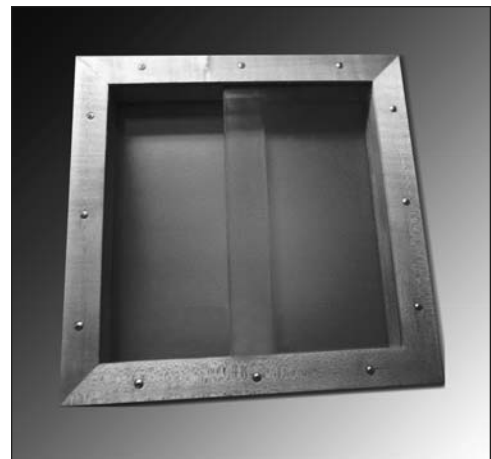
- Plastic laminate covered hardwood.
- Hold up to 12 ea 14”x 17” cassettes
- Magnetic door latches
- Grey or beige color
- Center hung design distributes weight evenly



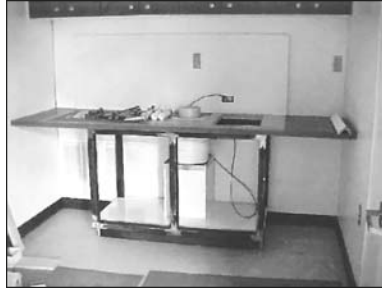
“Speakeasy” X-Ray View Window

If you really need to communicate effectively with the treatment room you should check out the a-fabco x-ray protective window with the “Speakeasy” voice passage

- Eliminates body contortions necessary to speak into “little hole at the bottom of the frame, as with conventional x-ray windows.
- Overlapping offset panes provide a voice opening that allows for normal speech while maintaining shielding and providing a complete view of the patient.
- Can be used in walls or doors.
- Completely leaded metal or wood models can be made in any required size or lead equivalency.

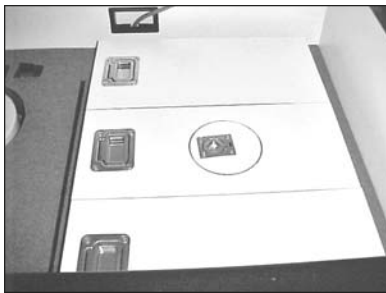


CUSTOM MOBILE LAB PROJECTS



MOBILE PET SCAN INSTALLATION

Dual station installation with recessed well chambers, 2" lead shielding with cabinets vented to allow for air conditioning return. Installation is done at the a-fabco plant in Gibsonton, Florida.



MOBILE HEART SCAN VAN

Custom installation of work station in heart scan van. All cabinetry including inverter and wiring done by a-fabco personnel at our plant.



PRODUCT INDEX

About a-fabco * Company Information	2	Mobile Operator Personnel Shield * Vert. Adjust ..	13
Accessories	14	Mobile PET Scan Installation	15
Armoire Work Station, Options	6	Mobile Barrier Section with Window * Economy ...	3
		Mobile Shield * Plain * Economy	3
Cassette Storage * Saddle Bench	14	Mobile Shield * Arm Cutouts * Economy	3
Cassette Transfer Cabinet * thru wall	14		
Control Wall * Fixed * Double * "L" Deluxe	4	PET Cave	9
Control Wall * Fixed * Multiple Section Deluxe	4	PET L-Shield and Cave	9
Control Wall * Fixed * Single Sect. Deluxe	4	PET Scan Mobile Installation.....	15
		PET Scan Workstation	12
Decay & Sink Cabinets	10,11		
Decay Bin * Leaded, Options	10	Radiation Shield, Tabletop	9
Dose Drawing Shield	9	Radioisotope Storage Cabinet & WS * 48"	7
		Radioisotope Storage Cabinet & WS * 26"	7,8
Film Bin & Storage Cabinet, Options.....	14	Radioisotope Storage Cabinet & WS * 36"	7,8
Fixed & Mobile Operator Control Walls, Deluxe	3	Room Divider, Lead Vinyl, Flexible	13
Fixed & Mobile Operator Control Wall, Economy ...	3		
Fixed Barrier * 3 section * 2 Windows * Economy	3	Saddle Bench Cassette Storage	14
Fixed Control Wall * Double Section "L" * Deluxe	4	Sliding Door Lockable Work Station, Options	5
Fixed Control Wall * Multiple Section * Deluxe	4	"Speakeasy" X-Ray Window * Voice Passage	14
Fixed Control Wall * Single Section * Deluxe	4	Sharps Container * Leaded with Chute	11
Fluoroscopic Chair, Mobile	13	Sharps Container * Leaded Single, Double Port	12
Fluoro Barrier, Mobile	13	Shipping Container Storage Module	12
Heart Scan Van, Mobile	15	Tabletop Radiation Shield	9
Lithotripter Operator Wall * Economy	6	Unimod Radioisotope Storage Cabinet 48"...	7
L-Shield, PET with Cave	9	Unimod Radioisotope Storage Cabinet 26"	7,8
		Unimod Radioisotope Storage Cabinet 36'	7,8
Mobile 3 Sided Enclosure with Glass	13		
Mobile Fluoro Barrier	13	View Window * X-Ray Voice Passage	14
Mobile Heart Scan Van	15	Vinyl Flexible Lead Room Divider	13
Mobile Operator Control Wall * Deluxe	4		
		X-Ray View Window "Speakeasy	14